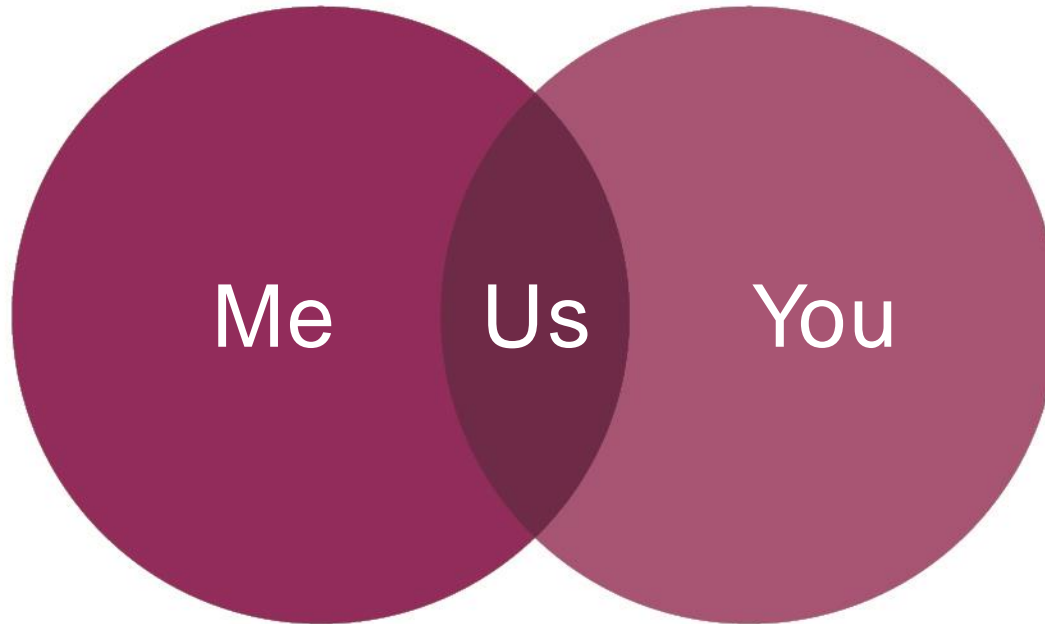




How is a baby made?

Ground Rules

Respect



Listening



Confidentiality



Learning Objective: To learn about reproduction

I can...

- ✓ Label the male and female body parts associated with conception and pregnancy
- ✓ Identify what sexual intercourse is and explain that this may be one part of an intimate relationship between consenting adults
- ✓ Explain that a baby is made when a sperm (male) meets an egg /ovum (female) and then the fertilised egg settles into the lining of the womb (female) and define the term reproduction.
- ✓ Describe what pregnancy is, where it occurs and how long it takes in a human.

Is it the man or woman who has sperm?

Where does the sperm come out of?

Is it the man or woman that gets pregnant?

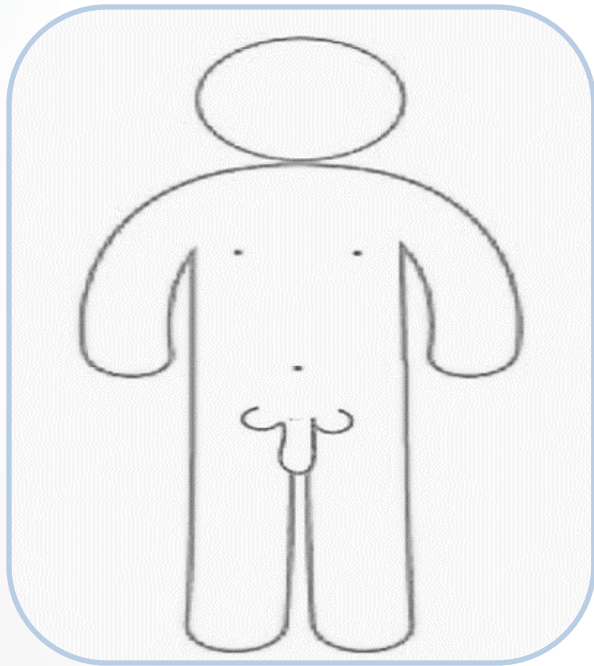


Quick Quiz!

Where does a baby grow before being born?

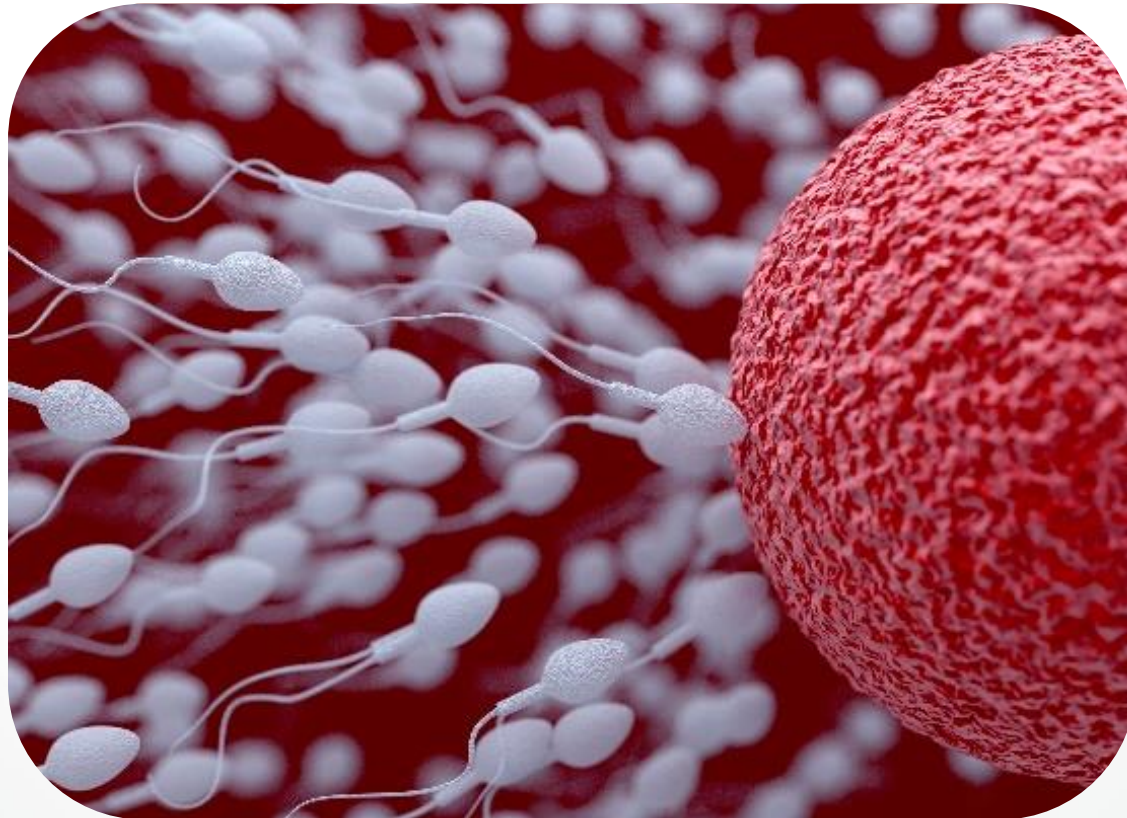
What can happen if a man and woman have sex?

The man releases a fluid from his penis which contains sperm



Sperm

When sperm (male cell) joins with a female egg (Ovum) this is known as fertilisation. Once attached to the lining of the uterus this will grow into a baby



Sperm

Ovum

Are all babies made
this way?



Put the cards in the correct sequence

Sperm is released from the penis. It is called semen and goes into the woman's vagina.

Millions of tiny sperm quickly swim inside the female vagina towards the fallopian tubes, this meets the egg and sticks to it to enter. This means the egg is fertilised.

The fertilised egg divides to form a ball of cells called an embryo then a foetus and then develops into a baby.

The female ovum is fertilised by the male sperm and attaches to the lining of the uterus.

Put the cards in the correct sequence

When the penis enters the female vagina this is referred to as sex or sexual intercourse.

During the pregnancy, the baby grows in the uterus (womb) and care is provided by a midwife who also helps deliver the baby.

A female is pregnant for 9 months until the baby is ready to be born.

When an adult couple are in a relationship they may decide to have sexual intercourse. They should both be comfortable and happy doing this together.

Answers – correct order:

1

When an adult couple are in a relationship they may decide to have sexual intercourse. They should both be comfortable and happy doing this together.

2

When a male penis grows hard, this is called an erection. When the penis enters the female vagina this is referred to as sex or sexual intercourse.

3

Semen is released from the penis into the woman's vagina.

4

Millions of tiny sperm quickly swim inside the female vagina towards the fallopian tubes, this meets the egg and sticks to it to enter. This means the egg is fertilised.

Answers – correct order:

5

The female ovum is fertilised by the male sperm and attaches to the lining of the uterus.

6

The fertilised egg divides to form a ball of cells called an embryo then a foetus and then develops into a baby.

7

A female is pregnant for 9 months until the baby is ready to be born.

8

During the pregnancy, the baby grows in the uterus (womb) and care is provided by a midwife who also helps deliver the baby.

Trusted adult

Staff member
at school

**You can
talk to...**

School
nurse

Teacher

Parent or
carer

